



**HIGH DESERT  
CORRIDOR**

JOINT POWERS AGENCY

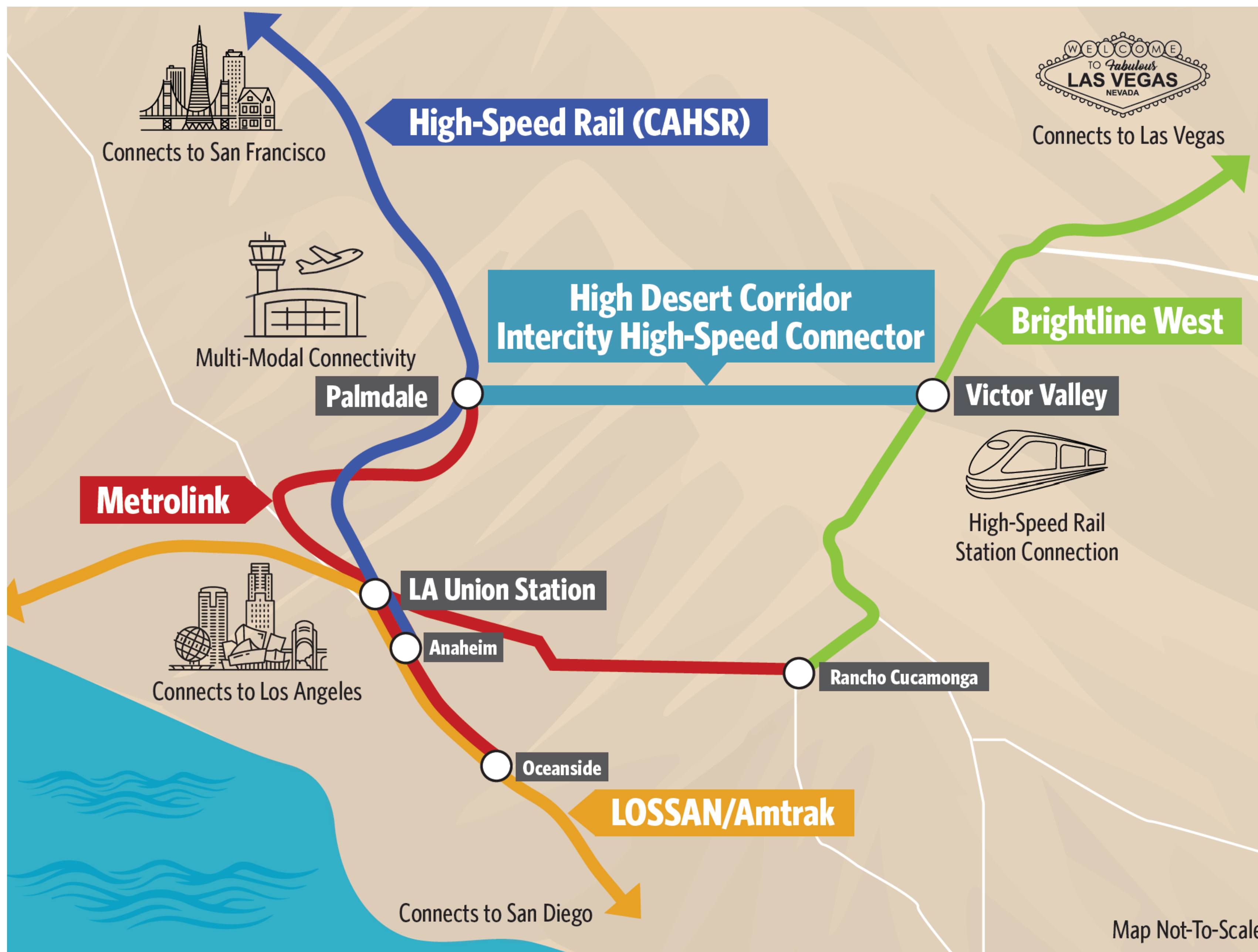
*HIGH DESERT CORRIDOR PROJECT*

**Welcome**  
***Bienvenidos***



[www.highdesertcorridor.org](http://www.highdesertcorridor.org)

# HDC High Speed Rail Connects CA High Speed Rail & Brightline West



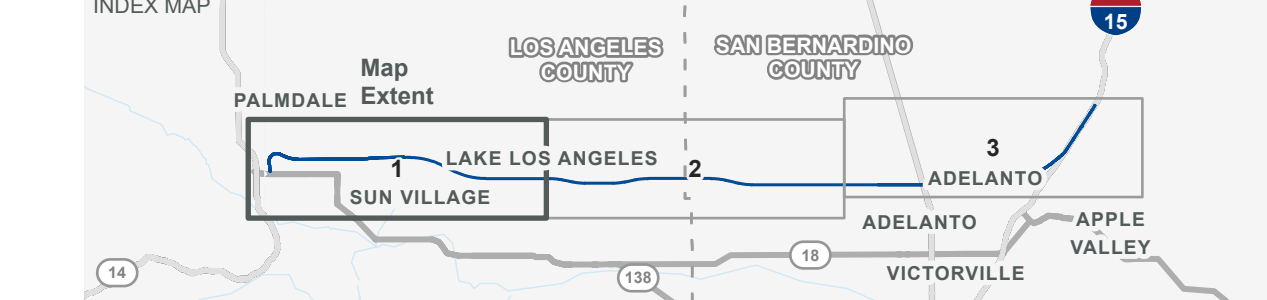
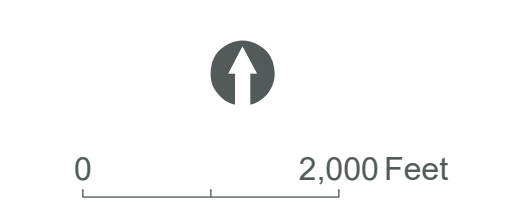
- 54-mile High Speed Intercity Rail Connector Project
- EIR/EIS Completed in 2016
- 8+ year public process, with Federal Railroad Administration as Federal Cooperating Agency
- NEPA/Record of Decision approvals anticipated late 2026/early 2027
- Two Environmentally Cleared Stations by:
  - CAHSR, Palmdale, LA County, 2021
  - Brightline West, Victor Valley, San Bernardino County, 2023



Palmdale HDC/Metrolink Station

**HIGH DESERT CORRIDOR PROJECT ALIGNMENT  
MAP 1 OF 3**

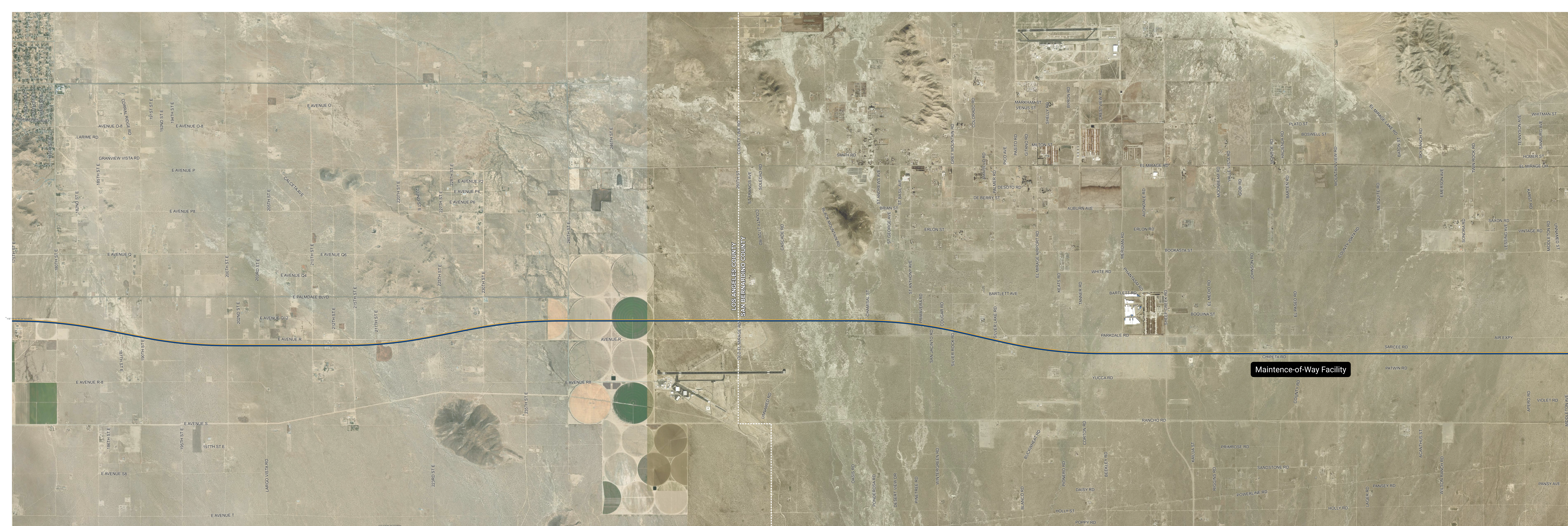
High Desert Corridor Alignment



CONCEPTUAL ALIGNMENT PLAN FOR ENVIRONMENTAL AND OUTREACH PURPOSES ONLY – SUBJECT TO CHANGE



Exported: 5/28/2024 12:41 PM

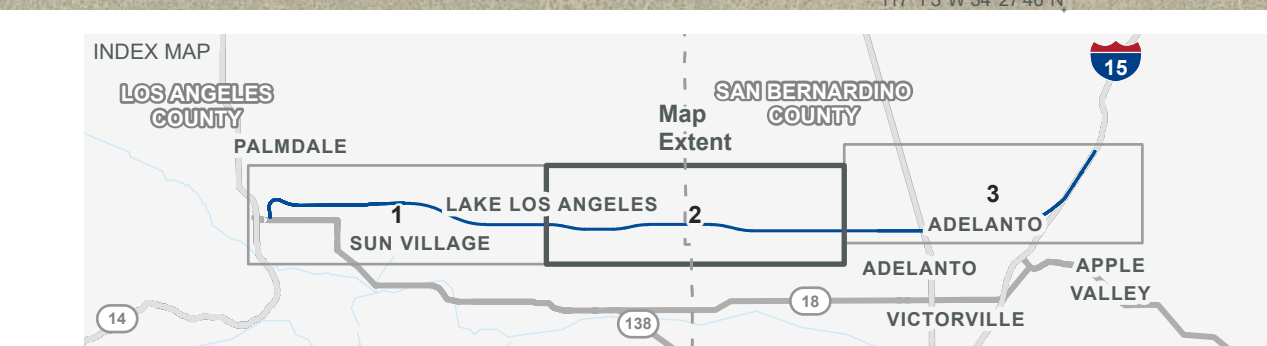
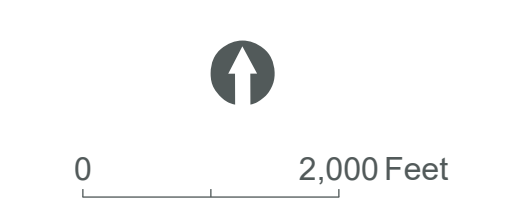


Maintenance-of-Way Facility

LOS ANGELES COUNTY  
SAN BERNARDINO COUNTY

**HIGH DESERT CORRIDOR PROJECT ALIGNMENT  
MAP 2 OF 3**

High Desert Corridor Alignment



CONCEPTUAL ALIGNMENT PLAN FOR ENVIRONMENTAL AND OUTREACH PURPOSES ONLY – SUBJECT TO CHANGE



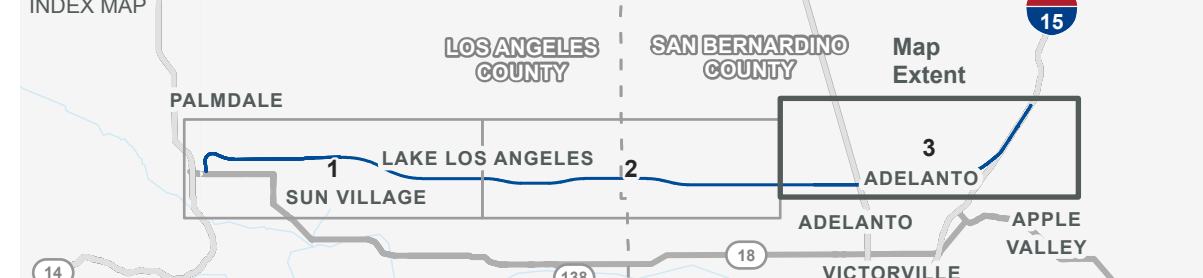
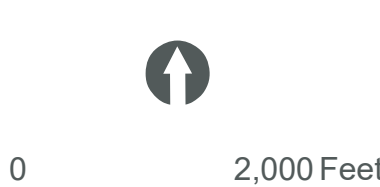
Exported: 5/28/2026 12:41 PM



Victor Valley HDC/BLW Station

**HIGH DESERT CORRIDOR PROJECT ALIGNMENT  
MAP 3 OF 3**

High Desert Corridor Alignment



CONCEPTUAL ALIGNMENT PLAN FOR ENVIRONMENTAL AND OUTREACH PURPOSES ONLY – SUBJECT TO CHANGE



Exported: 5/28/2026 12:41 PM